



THE ONLY ALL-IN-ONE TOOL FOR LIGHTING DESIGN
PROGRAMMING AND PRE-VISUALIZATION

cast-soft.com/demo



FESTIVAL R.POP

Lighting Design Company: 4Design - Tony Dreux

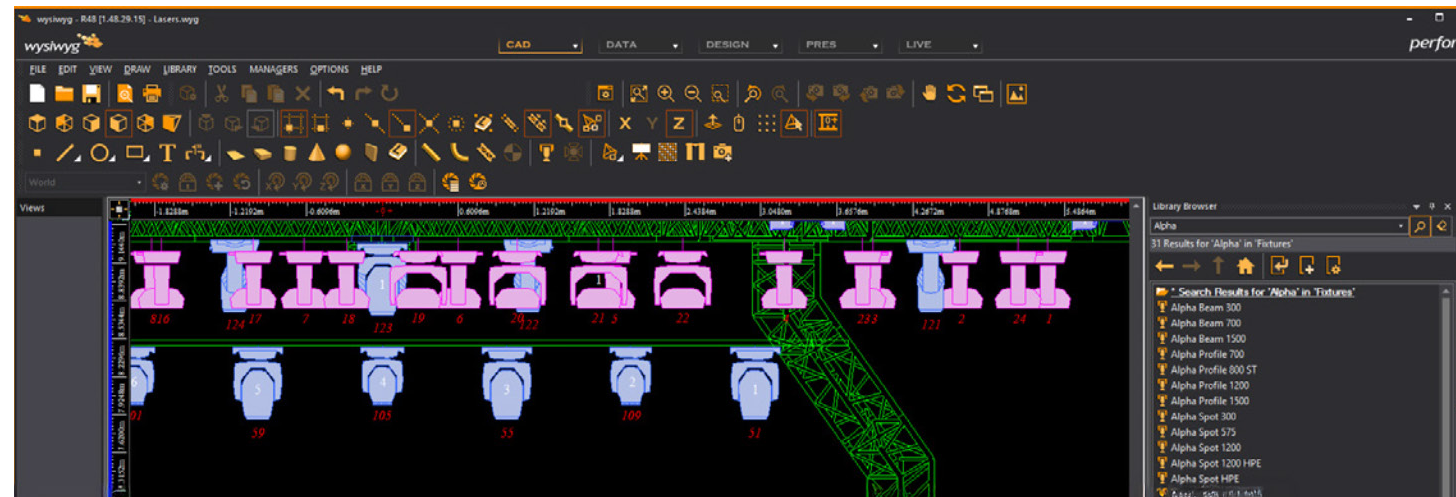
Technical Rental Company: LR événement - Adrien Giraudet

Artistic Director: Quai M - Benoît Benazet

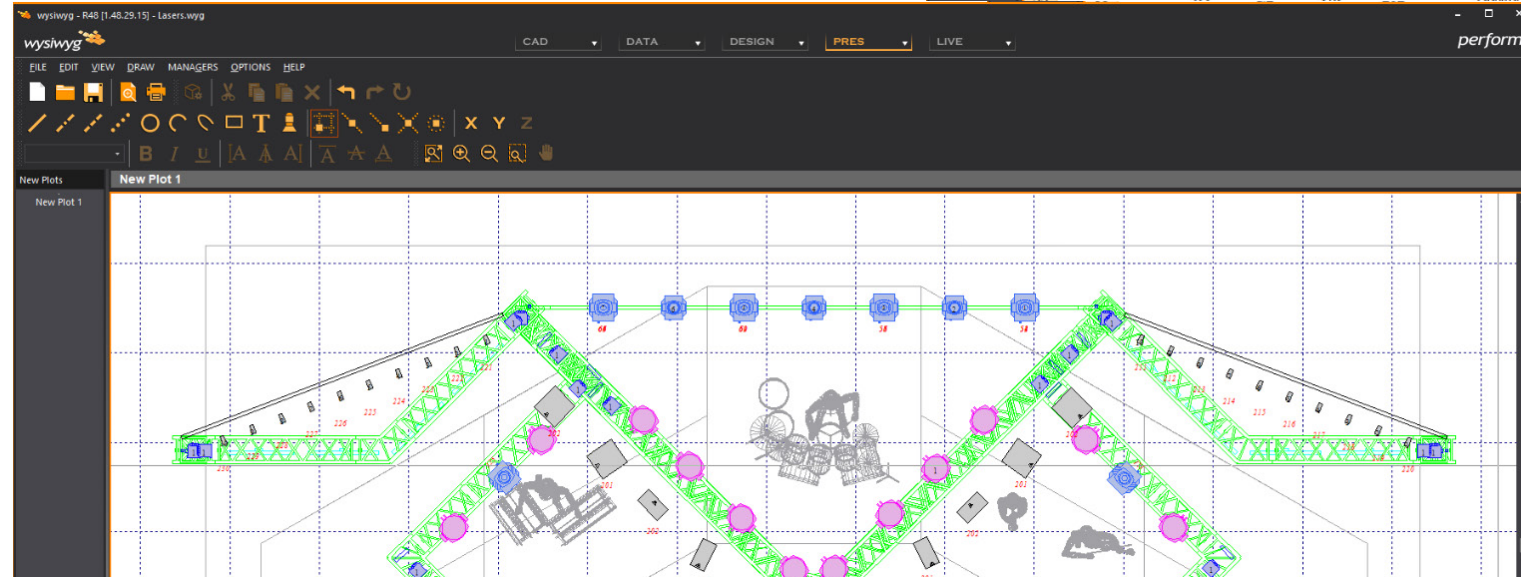
Promoter: Ville de La Roche-sur-Yon



WYSIWYG's an all-in-one lighting design application that delivers CAD functionality, along with paperwork features and lighting design tools.



Columns	Dimmer	Patch	Channel	Hookup	Console	Position	Unit	Circuit Name	Circuit Number	Type	Wattage	Purpose	Color
Focus	<all>	<all>	<all>	<all>	<all>	<all>	<all>	<all>	<all>	<all>	<all>	<all>	<all>
Channels	29	d.1	201	Control						Phaenon X Pro	700 W	O/W	
Dimmers	30	d.1	201	Control						Phaenon X Pro	700 W	O/W	
Hanging Positions	31	d.1	201	Control						Phaenon X Pro	700 W	O/W	
Purpose	32	d.1	201	Control						Phaenon X Pro	700 W	O/W	
	33	d.2	202	Control						Phaenon X Pro	700 W	O/W	



CAD & LIBRARY

Wysiwyg features extensive CAD tools and a comprehensive library with over 25,000 relevant objects and symbols including, fixtures, accessories, truss, gobos, props, etc.

DATA

Wysiwyg's DATA mode tracks everything you design in CAD and extracts all the relevant technical information for quick access, filtering, and export.

PRESENTATION

Easily create plots and reports to communicate your design accurately with your team. This tool is invaluable to designers, design assistants, lighting operators, and electricians.

POWERFUL INTEGRATION

Use spreadsheets to change your lighting equipment, patch many fixtures in seconds, or change colors and accessories in groups. Spreadsheets are fully integrated with CAD so changes are automatically updated on both modes.



FOR CREATIVES

Building on the features of Report, wysiwyg Design allows users to explore their designs in a virtual environment. Design is the ideal solution for users looking for an all-inclusive production design tool with visualization, but who don't need to program from a console.

wysiwyg Design adds 3D capabilities and real-time visualization to the features from wysiwyg Report such as CAD tools, library, and paperwork. Design lighting looks with the offline editor and no lighting console.

Use the offline designer tool to create scenes and present virtual simulations to your production team. The fixture attributes in wysiwyg resemble the actual hardware and behave just like the real ones.



DESIGN YOUR STAGE AND LIGHTING PRODUCTION WITH THE MOST ACCURATE LIGHTING FIXTURE SIMULATION AVAILABLE



FOR POWER USERS

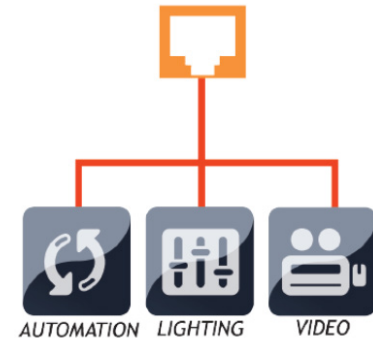
Built on top of Design, Perform includes CAD tools, library, paperwork, and 3D real-time visualization and allows connectivity to third-party controllers through DMX, sACN, Art-Net, CITP, Lasers, and Motion control over Ethernet protocols.

Program and playback complex lighting sequences from your Lighting Consoles and other controllers. Use standard protocols to visualize the exact effect of the consoles'/controllers' output in real-time. Experience The Power of Connectivity.

Connect directly to third-party applications such as GrandMA2 PC, Luminex, Compulight, Madrix, Hog, etc, via DMX (sACN & Art-Net).

INPUT VIDEO

Extend video interface of live streaming video from capture device or through CITP protocol.



CONTROL LASERS

Control lasers in Live mode with the Pangolin Control System and Sollinger Animation.

DMX CHANNELS

Connect as many as 131,072 channels of DMX (256 universes) and nearly limitless patching options.



Perform Lite handles 10 universes of DMX as opposed to full Perform for a lower entry point.



PRE-CUE AND PREVIZ LIGHTING, VIDEO, LASERS & MOTION CONTROL FOR ENTIRE SHOWS, SIMULTANEOUSLY AND IN REAL-TIME

wysiwyg

2025



A robust **Cables feature**, which allows fully customizable Single Cables, Multicables, and Splitters to be drawn/inserted as well as to be connected to fixtures and have their lengths calculated in cable spreadsheets

Advanced tools for cables such as a **Daisy Chaining quick tool**

Six new Particle Effects: Comets, Starbursts, Glitter, Multi-Mine, Flashpots, and Sparklers

Highly realistic and customizable **static people models** for enhanced visual acuity

Bug fixes and improvements, many related to MVR, such as support for the latest version of MVR (1.5), exporting Rigging Points objects as MVR Support Nodes and including fixture weights in MVR exports



do you dream

ABOUT LIGHTING?



Students can Apply for a FREE Wysiwyg Student Edition!

Wysiwyg Educational software gives you the power to learn at your pace, in or out of the classroom. As a student, you can apply for a FREE Wysiwyg Design Student Edition or upgrade it to one of the paid options. *Terms and conditions apply.

[Learn More](#)

Wysiwyg Prices

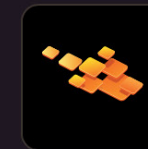


wysiwyg Design

USD \$99.00 /Month

USD \$1,188.00 billed annually

- ✔ Comprehensive 3D CAD including industry tools
- ✔ Visualize show lighting looks without consoles
- ✔ Seamlessly create plots and reports
- ✔ Unlimited WYSIWYG Academy Courses



wysiwyg Perform Lite

USD \$149.00 /Month

USD \$1,788.00 billed annually

- ✔ All the features of Design product
- ✔ Adds LIVE mode console connectivity support
- ✔ 10 Universes of DMX
- ✔ Unlimited WYSIWYG Academy Courses



wysiwyg Perform

USD \$199.00 /Month

USD \$2,388.00 billed annually

- ✔ Best value!
- ✔ Top WYSIWYG product level including all features
- ✔ Unlimited Universes of DMX
- ✔ Unlimited WYSIWYG Academy Courses

[Buy Here](#)

