




How to activate the wysiwyg Educational Cloud license:

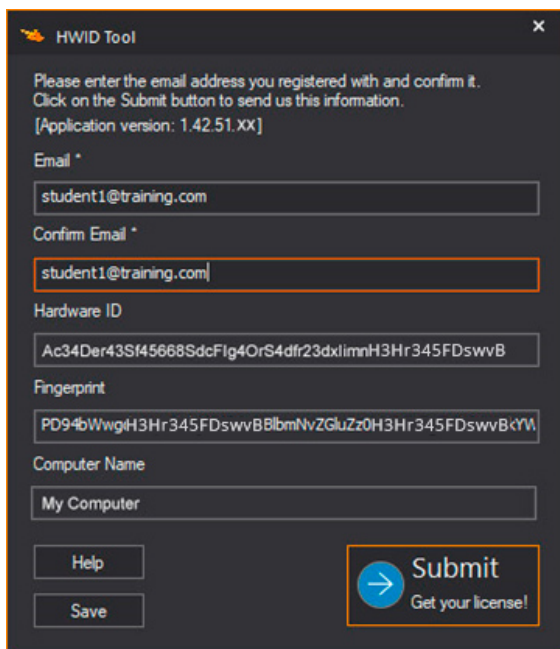
For any issues with this process, please contact education@cast-soft.com

- 1 – Once you receive your approval confirmation, login to your account and from your Dashboard go to Download Section
- 2 – Download the wysiwyg Educational installer (.zip)
- 3 – Unzip the file and run the .exe installer and follow the onscreen instructions
- 4 – After completing the installation, reboot your computer.

NOTE: Please install it on the computer you plan to use for wysiwyg visualization. Once activated it cannot be changed.

5 – Click the Windows Start Menu  and locate: wysiwyg HWID Tool which is located in the CAST Software folder, or you can search for "HWID Tool".

6 – Run HWID Tool and click Continue on the dialog that appears, the utility will populate your Hardware ID Fingerprint, and Computer Name (Some fields will be empty). Fill in your email address, which will be your user ID for your wysiwyg login activation.

The image shows a screenshot of the "HWID Tool" application window. The window has a dark gray background and a title bar with the text "HWID Tool" and a close button. The main content area contains the following text and fields:

Please enter the email address you registered with and confirm it.
Click on the Submit button to send us this information.
[Application version: 1.42.51.XX]

Email *

Confirm Email *

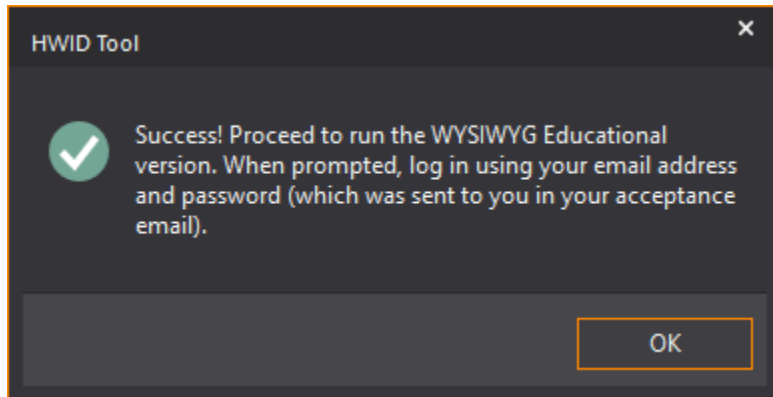
Hardware ID

Fingerprint

Computer Name

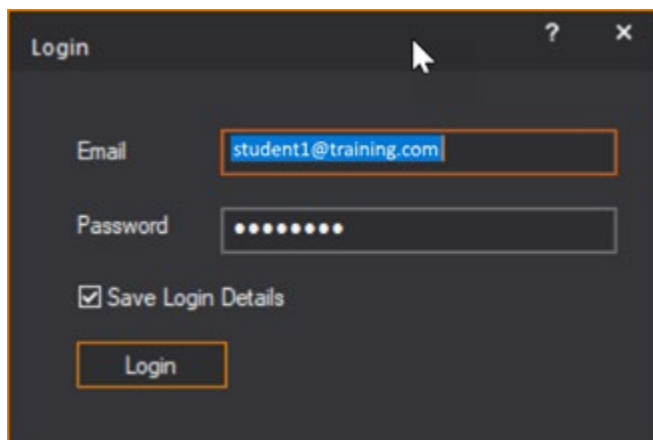
At the bottom of the window, there are three buttons: "Help", "Save", and "Submit". The "Submit" button is highlighted with a blue border and contains a blue arrow icon and the text "Submit" and "Get your license!".

7- Ensure the email address matches in both fields. Click the Submit button. You should get a success message. Click ok to finalize.



7 - Run wysiwyg Educational, you will see a login window. fill in your registered email and, at this point you should have received an activation password by email, copy and paste the password, don't leave any extra spaces at the end, and make sure to **Save Login Details** at the checkbox.

NOTE: Don't use your Educational Portal password for the wysiwyg login, they are not the same. If you haven't received a password via email yet, contact education@cast-soft.com



8 - Click **Login**.

Once it is connected to the wysiwyg license server with the correct login credentials, wysiwyg will be launched.